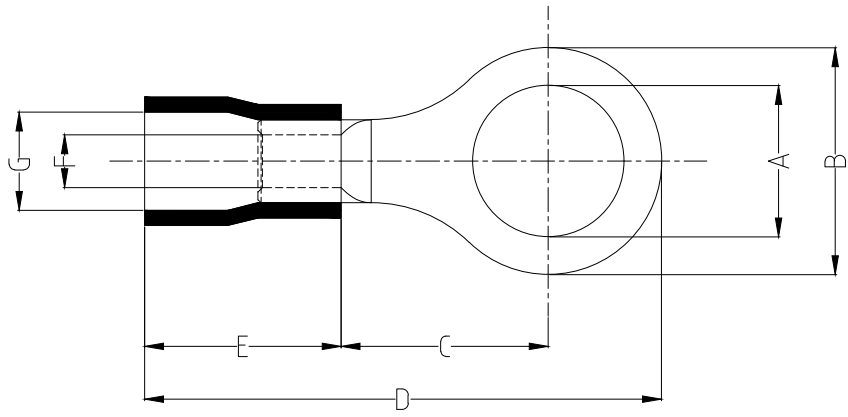
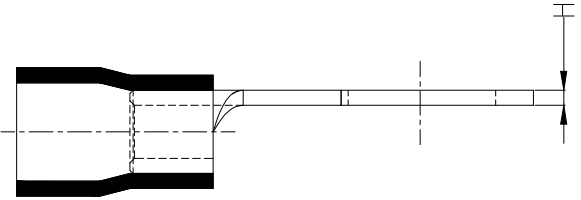


1 2 3 4 5 6 7 8

REV	LOCATIONS	DESCRIPTION	DATE	REVISER	APPD

Notes:

Material: Copper
 Insulator: PVC (UL 94V-0)
 Plating: Matte tin plated
 Wire range: 0.5~1.5mm²/ (22~16AWG)
 Applicable screw: 1/4"
 Temperature Range-Operating: 0°C~75°C
 Maximum electrical rating: 600V
 Max current: 19A



Dimensions							
A	B	C	D	E	F	G	H
±0.3	±0.5	±1	±1	±1	±0.5	±0.5	±0.05
6.4	9.8	8.3	23.5	10.5	1.7	4.2	0.7

PART NO.	Color Of Insulator
FRT02-00125060SARD2	Red
FRT02-00125060SABU2	Blue
FRT02-00125060SABK2	Black

<p>THIRD ANGLE PROJECTION</p>	GENERAL TOLERANCES (UNLESS SPECIFIED)		APPROVE BY	DATE	
	X. ±0.30	X.* ±5'	LEO	09/JAN/21	
	DESIGN UNITS mm		CHECKED BY	DATE	
	X.X ±0.20	X.X' ±2'	GISELLE	09/JAN/21	
SCALE	SIZE	X.XX ±0.15	X.XX' ±1'	DRAWN BY	DATE
5:1	A4	X.XXX ±0.10	X.XXX' ±0.5'	PYD	09/JAN/21

PART NO.	ITEM NO.	<p>Building Technology Cornerstone</p>
FRT02-00125060SAXX2	FRT02	
TITLE		REV 0
Ring tongue terminal		SHEET NO. 1/1
THIS DRAWING CONTAINS INFORMATION THAT IS PROPRIETARY TO TXGA INDUSTRIAL ELECTRONICS(S.Z)CO.,LTD AND SHOULD NOT BE USED WITHOUT WRITTEN PERMISSION		

1 2 3 4 5 6 7 8